

# Fires, Floods and Local Response



# Who we are



*Coalitions & Collaboratives, Inc. (COCO) seeks to foster on-the-ground conservation efforts that protect and restore natural resources and local communities by supporting collaborative conservation organizations to produce collective impacts through stakeholder driven efforts.*



# Where we work



Forest Fuels Mitigation



Post-Fire Restoration



Channel Restoration



Forest Health



Trail work



Reforestation



Erosion Control



Fire Suppression



Monitoring



Invasive Weeds Mitigation



# Where we work



Hillslope Stabilization



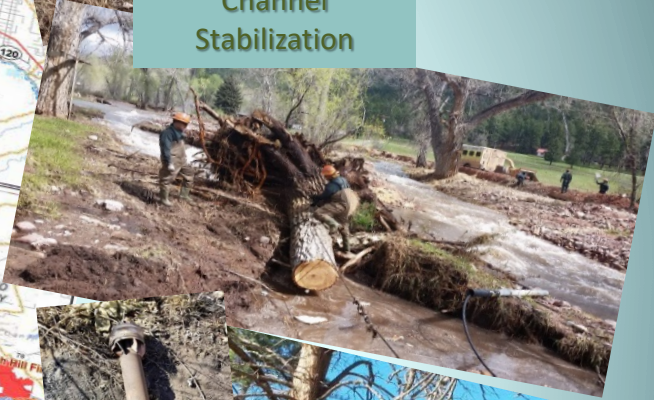
Post-Fire Restoration



Erosion Control



Channel Stabilization



Debris Removal

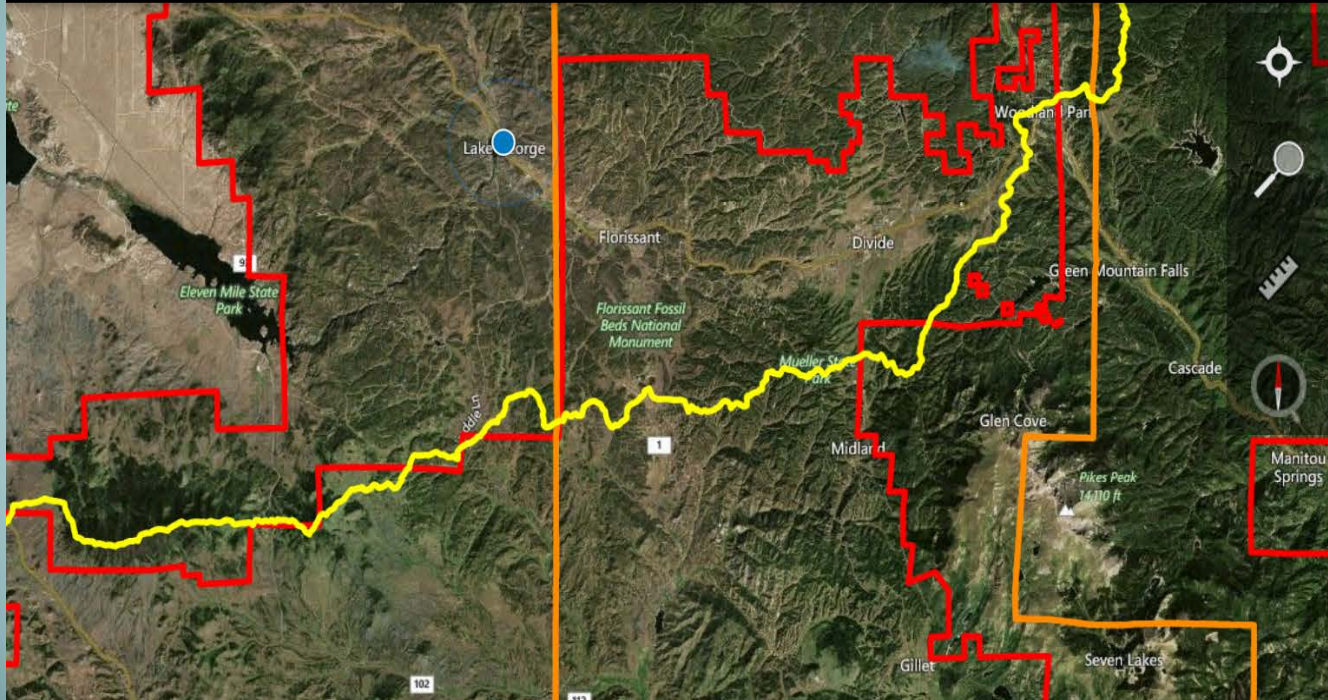


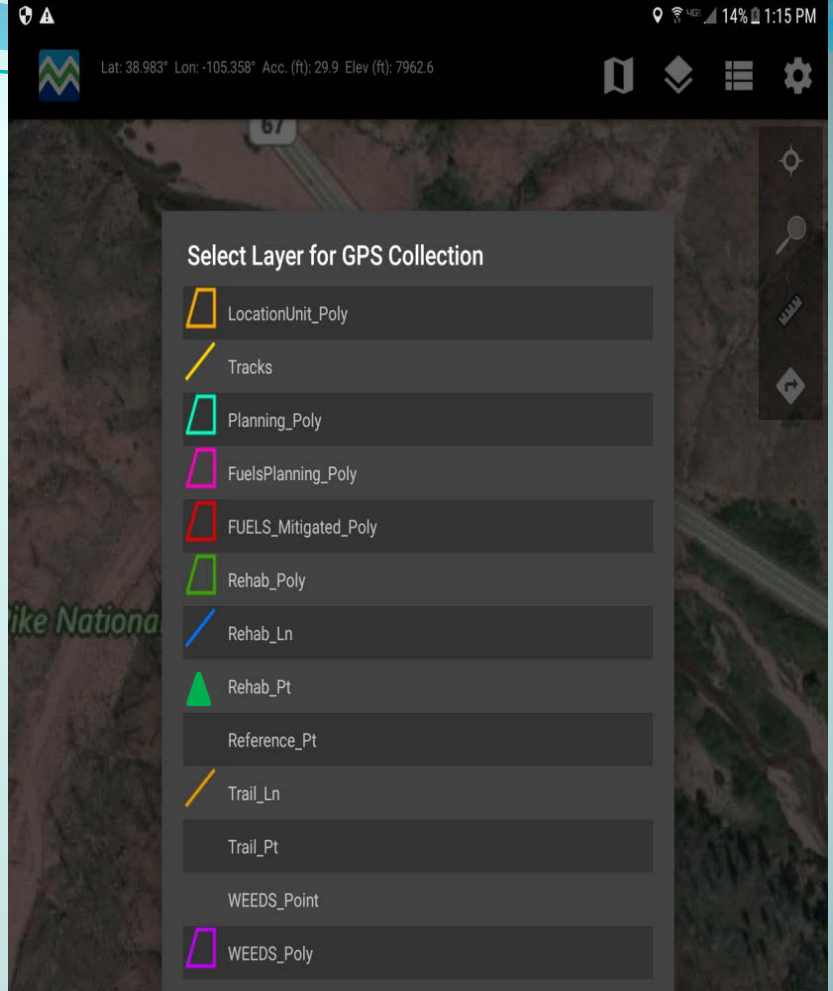
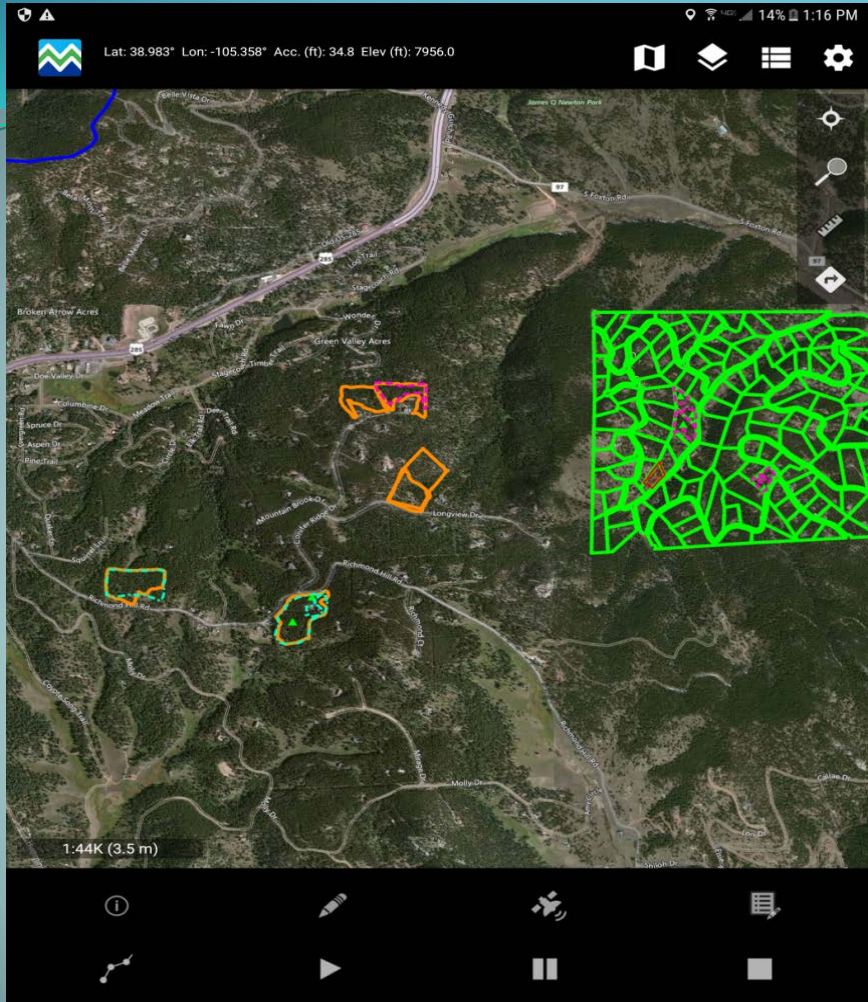
# Mobile Map app



MobileMap Lat: 38.982° Lon: -105.358° Acc. (ft): 34.8 Elev (ft): 8054.5

94% 10:41 AM





# Features

## Select an Action

DONE

SIGN IN TO ARCGIS

UPLOAD FEATURES

UPLOAD PHOTOS

DOWNLOAD

SELECT FEATURE SERVICES

INITIALIZE DATABASE

EDIT DOWNLOAD PARAMETERS

EDIT CONFIGURABLE DEFAULTS

SELECT DATA DIRECTORY

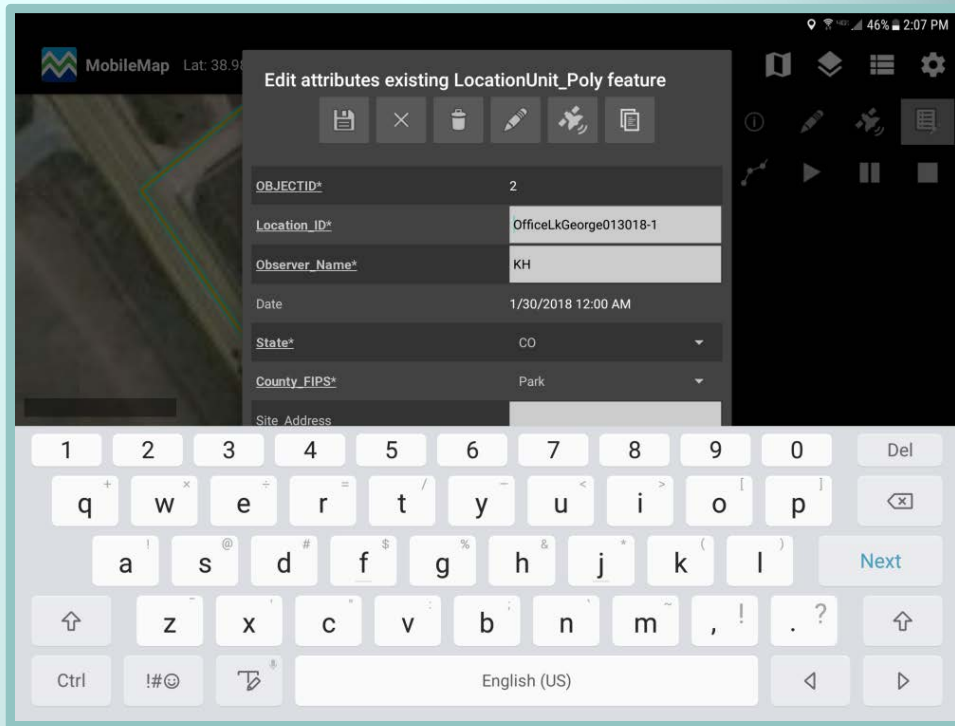
DOWNLOAD BASEMAP

EXPORT DATABASE

FEATURES TO JSON

EXPORT SETTINGS

IMPORT SETTINGS



# Features

## Edit attributes existing LocationUnit\_Poly feature



## Select Layer Display Properties

DONE

Layer

FUELS\_Mitigated\_Poly

Label Field:

none

LocationUnit\_Poly

Label Field:

none

CUSP\_Boundary.shp

Outline:



Fill:

Counties.shp

Outline:



Fill:

USFS\_CO.shp

Outline:



Fill:

CUSP\_Topo\_L15.tpk

a\_CUSP\_Bing\_L17\_CTC

## Clone Feature

Target Feature Layer:

FuelsPlanning\_Poly

Field

Value

Location\_ID

ManualTest031318-1

Observer\_Name

kh

Date

1520920800000

State

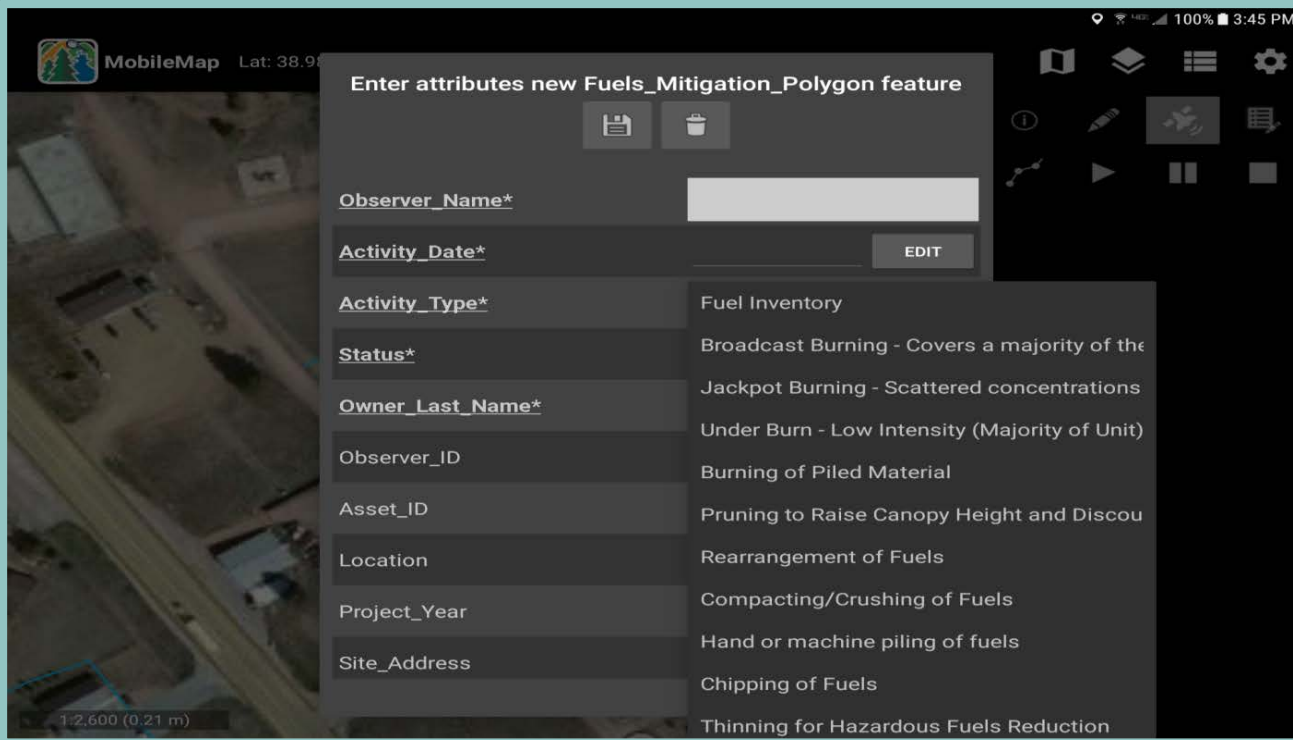
g

CANCEL

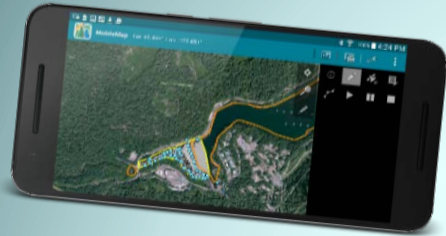
CLONE



# User friendly



# MobileMap Data Flows



## MobileMap

- Navigation
- Location awareness
- Collect and edit data
- View and query data
- Collect photos
- Android based

**MB&G**

MASON, BRUCE & GIRARD, INC.



## ArcGIS Desktop / Pro / Online

- Package base map data
- Design data model
- Publish map services
- Perform advanced analysis



## CMS Web Site

- View data and photos
- Spatial + attribute search
- Track field work progress
- Perform data QA/QC
- Perform specific analysis
- Export data for external systems
- Generate reports

## External Systems

- GIS and data viewers
- CSV, Excel, Shapefile, KML formats



**Search Features**

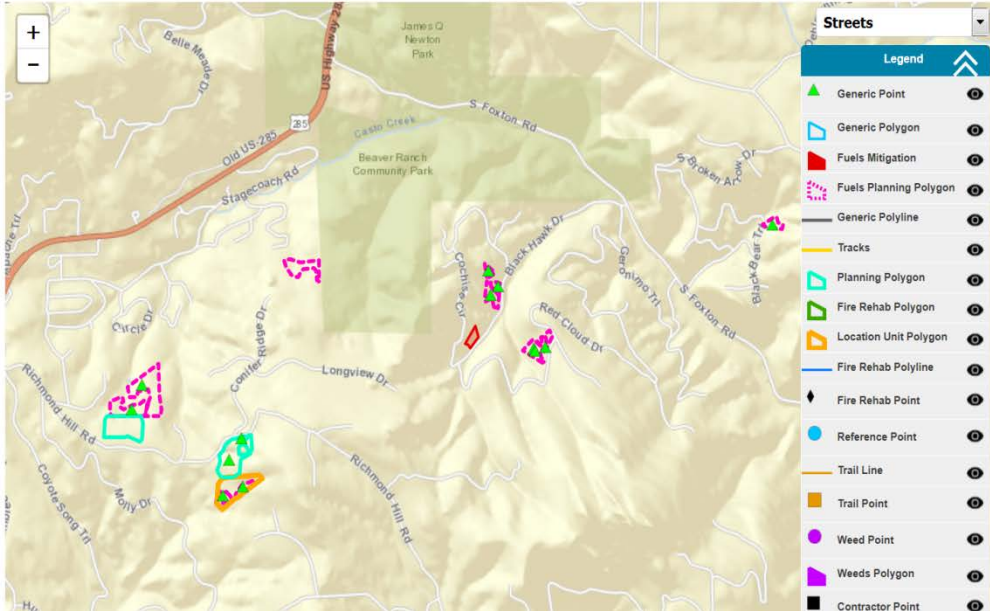
Select Layer to Search

**Zoom To Features**

Fuels Mitigation:  
Select by Project\_Name

Fuels Planning Polygon:  
Select by Project\_Name

**Query Results**



**Export**

KML

Shapefile

CSV

**Photos**

### COALITIONS & COLLABORATIVES, INC

#### Search Features

Select Layer to Search

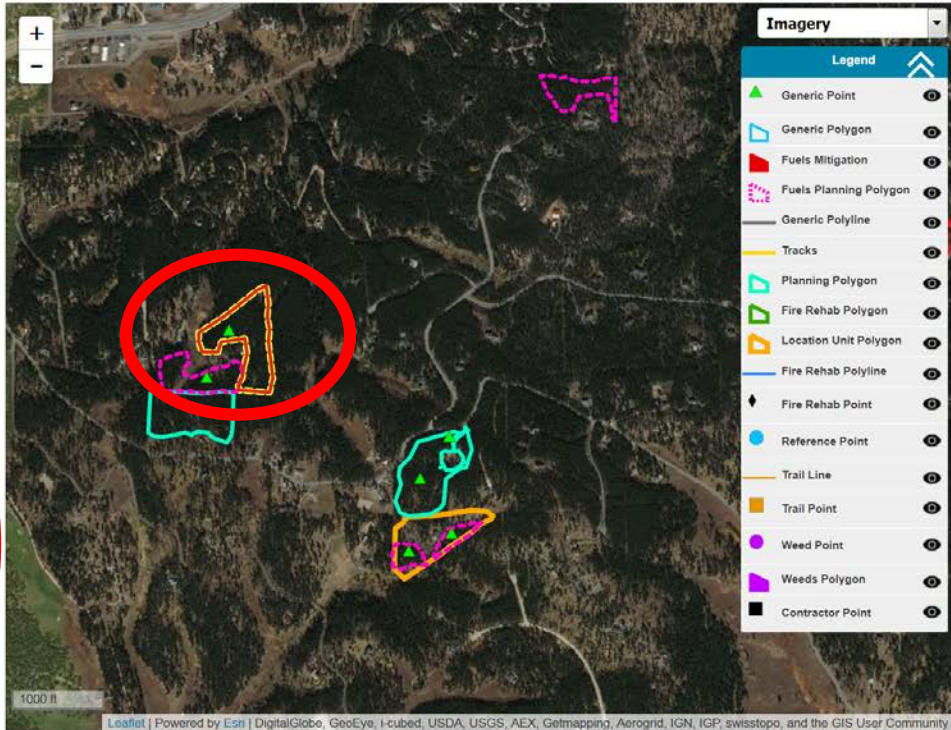
#### Zoom To Features

Fuels Mitigation:  
Select by Project\_Name

Fuels Planning Polygon:  
Select by Project\_Name

#### Fuels Planning Polygon

OBJECTID	15
Location ID	RHill007
Management Objective	null
Fuels Activity Type1	Lodgepole patch cut
Fuels Activity Type2	null
Fuels Activity Type3	null
Activity Notes	null
Status	In Process
Proposed Acres	null
Photos Before	null
Stand Aspect	NW
Stand Type	Lodgepole Pine
Stand Phase	No prior treatment
Stand Description	null
Tree Species	null
Notes	null



#### Export

KML

Shapefile

CSV

#### Photos

# Questions?

Elizabeth McVicker, J.D., Ph.D.  
Metropolitan State University of Denver  
Coalitions & Collaboratives, Inc.  
Colorado, USA

\* \* \* \* \*

Kat Herrera

*GIS Coordinator*

*Coalition for the Upper South Platte (CUSP)*

*Coalitions & Collaboratives, Inc. (COCO)*

*kat@culp.ws*

*www.culp.ws*

