

The SINA-NET in Open/Big data management within ISPRA and SNPA

Perugia, November 22nd 2018

Giuseppina Monacelli
ISPRA

Outlines

- ISPRA within the international context
- Overview: Water JPI, PRIMA, INFO/RAC, WASAG
- The National Environmental Information System
- Data workflow management within the SINA
- Examples of Data Integration: National Biodiversity Network (NNB) and INFOAria

POLICY
EU Water Framework Directive
EU Floods Directive
Water Information System for EU



RESEARCH

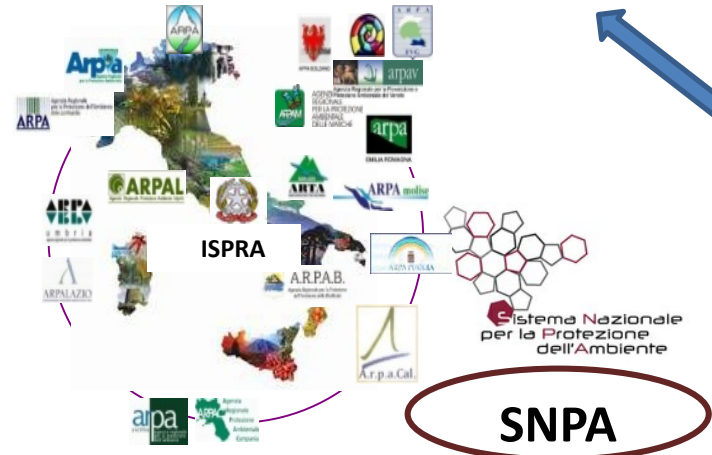
- PIANO
- WATER JPI
- WatEur
- WaterWorks2014
- WaterWorks2015
- IC4WATER
- WaterWorks2017
- PRIMA

UNEP & FAO

- INFO/RAC
- WASAG

SINTAI
Sistema
informativo
Nazionale
Acque
Interne

MATTM



ISPRA
Istituto Superiore per la Protezione
e la Ricerca Ambientale

SINA (PFR-SIRA)
SINA.net
Rete del Sistema Informativo Nazionale Ambientale

INTERNATIONAL INITIATIVES

Water Joint Programming Initiative
Water challenges for a changing world



PRIMA - Partnership for Research and Innovation in the
Mediterranean Area



UNEP/MAP INFO-RAC - Regional Activity Centre
for Information and Communication



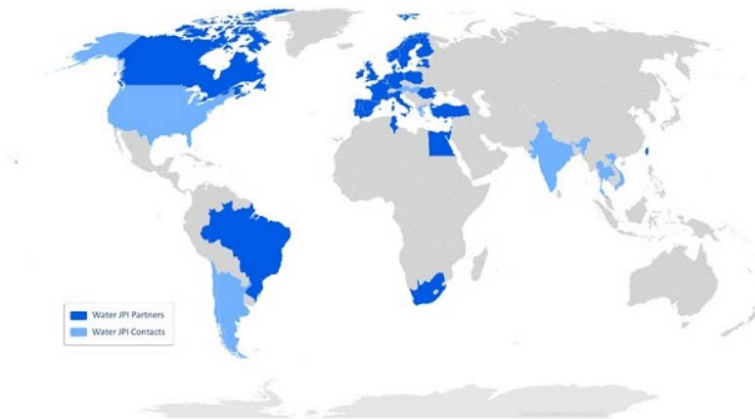
WASAG - The Global Framework on Water
Scarcity in Agriculture



WATERJPI: PARTNERSHIP AND THEMES

- Maintaining ecosystem sustainability
- Developing safe water system for the citizens
- Promoting competitiveness in the water industry
- Implementing a water-wise bio economy
- Closing the water cycle gap

NEW PARTNERSHIP MAP



PRIMA: PARTNERSHIP AND THEMES

PRIMA can currently count on the participation of **19 Euro-Mediterranean countries**, including 11 EU-countries (Croatia, Cyprus, France, Germany, Greece, Italy, Luxembourg, Malta, Portugal, Slovenia and Spain) and **8 non-EU countries** (Algeria, Egypt, Israel, Jordan, Lebanon, Morocco, Tunisia and Turkey).



MANAGEMENT OF WATER

Integrated and sustainable management of water for arid and semi-arid Mediterranean areas



FARMING SYSTEMS

Sustainable farming systems under Mediterranean environmental constraints

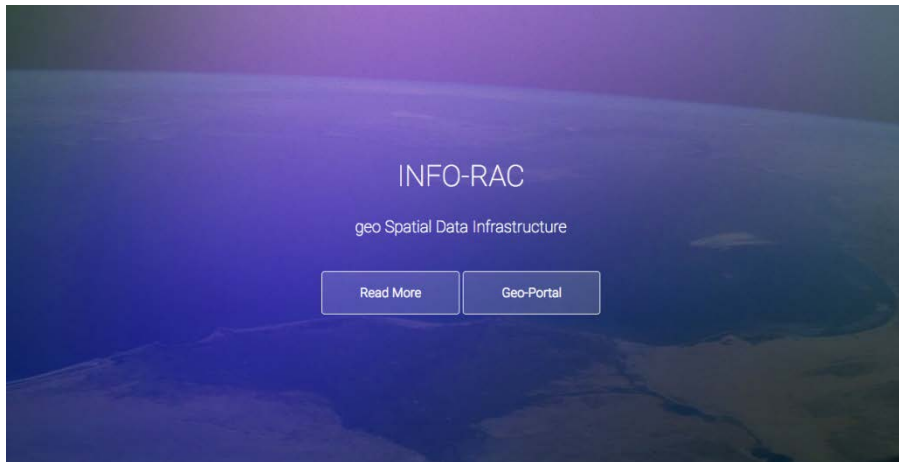


AGRO-FOOD VALUE CHAIN

Sustainable Mediterranean agro-food value chain for regional and local development

UNEP MAP - INFO/RAC

The **Regional Activity Centre for Information and Communication (INFO-RAC)** was established in 2005. INFO-RAC was mandated to establish a common information management infrastructure to facilitate and support information and communication activities across MAP.



InfoMap

is the UN Mediterranean knowledge platform conceived to provide and share data, information services and knowledge.

WASAG: WORKING GROUPS AND THEMES

- WASAG is open to a broad range of entities, such as States, international organizations, civil society organizations, academia, private sector entities and trade associations.
- Within the Italian partners (CREA, CNR, CIHEAM, ENEA and MATTM), ISPRA is in charge of the **Assessment of Climate Change Impacts** and the **WG on the Innovative Financial Mechanisms**.

Further International Interactions



7 th EAP



THE GLOBAL GOALS
For Sustainable Development



CLEAN ENERGY FOR ALL EUROPEANS

SMART AND CLEAN ENERGY FOR ALL
IMPLEMENTING THE ENERGY UNION STRATEGY

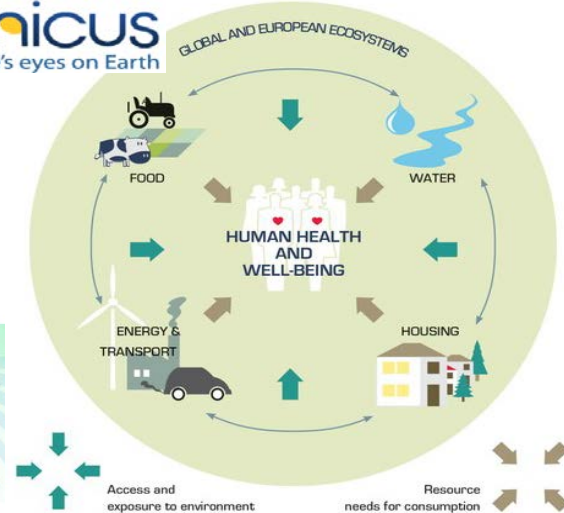
ENERGY UNION: 5 MUTUALLY SUPPORTIVE AND INTERLINKED DIMENSIONS

3

European Commission

CIRCULAR ECONOMY
Closing the loop

AN AMBITIOUS EU CIRCULAR ECONOMY PACKAGE



National Environmental Information System

- SINA implementation and management by the Regional Environmental Information Systems (SIRA).
- Cooperation ISPRA – ARPA/APPA – regional and local autonomous authorities, in data collection and management.
- Free dissemination and access to SINANET.

AAA Fatti riconoscere

SINANet Rete del Sistema Informativo Nazionale Ambientale

ISPRA Istituto Superiore per la Protezione e la Ricerca Ambientale

IT

Home

Rete SINANet

INSPIRE

Sistemi informativi ambientali ISPRA

Progetti

Punto Focale Nazionale EIONET

Groupware

Benvenuti nel Nodo nazionale della rete SINANet

Questo portale dell'ISPRA svolge le funzioni informative del Nodo nazionale della rete SINANet e, attraverso la funzione di Punto Focale Nazionale, assicura il collegamento alla rete europea EIONet dell'Agenzia Europea dell'Ambiente.

Nell'azione di coordinamento svolta dall'ISPRA per la realizzazione dell'infrastruttura nazionale per l'informazione territoriale e del monitoraggio ambientale (NITMA) prevista dal recepimento nazionale della Direttiva INSPIRE, la rete SINANet rappresenta lo strumento di raccolta e integrazione degli elementi informativi resi disponibili dalle autorità pubbliche, necessari ad assicurare l'interoperabilità dei set di dati territoriali e del monitoraggio ambientale e dei servizi ad essi relativi.

Il portale elenca inoltre i collegamenti ai Sistemi informativi ambientali sviluppati e gestiti dall'ISPRA.

ACCEDI AL CATALOGO

ACCESSO ALLA CARTOGRAFIA

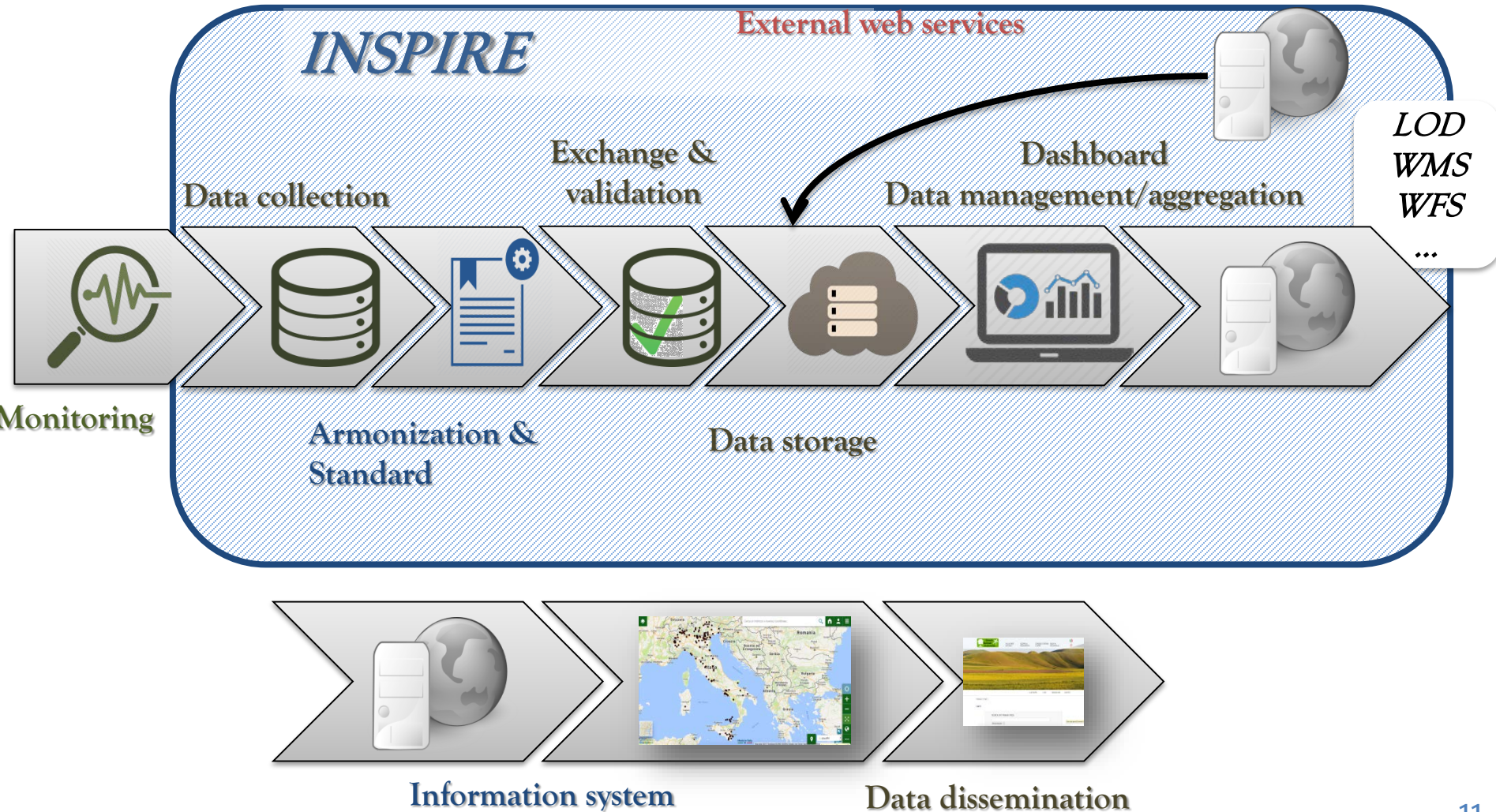
Tramite il Visualizzatore Generale è possibile consultare la cartografia ISPRA ed eventualmente aggiungere altri strati informativi reperibili sul Web o accessibili tramite i metadati contenuti nel catalogo.

Apri

DICHIAZIONE FGAS
Comunicazione ai sensi dell'Art. 16
comma 1 del DPR 43/2012

Consulta i dati territoriali e del monitoraggio ambientale on line dell'ISPRA

Workflow SINA/SINANET

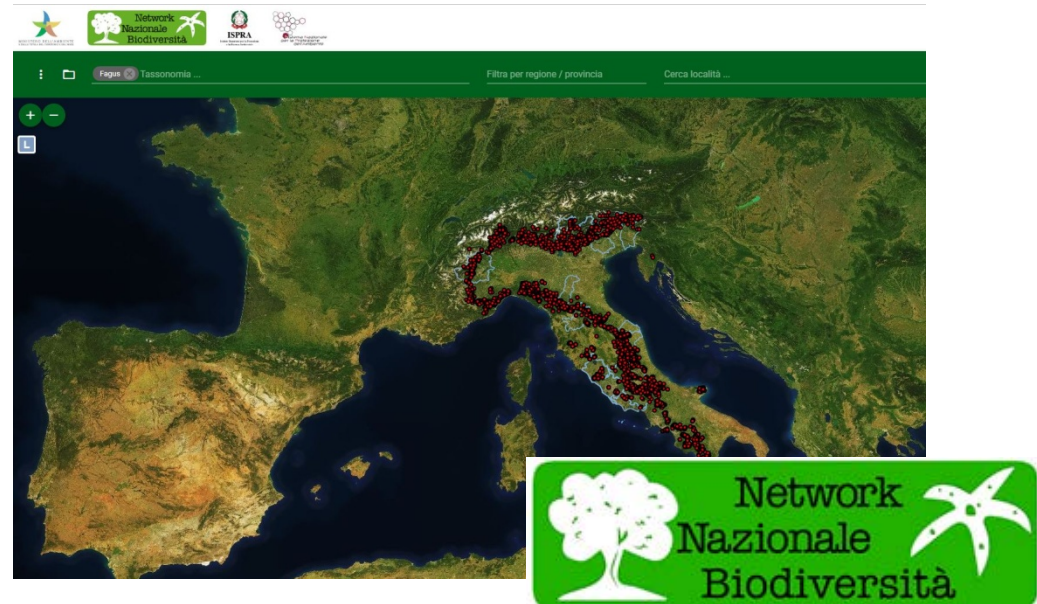


Two examples of data integration

- National Network for Biodiversity (NNB)
- National platform for air quality InfoARIA

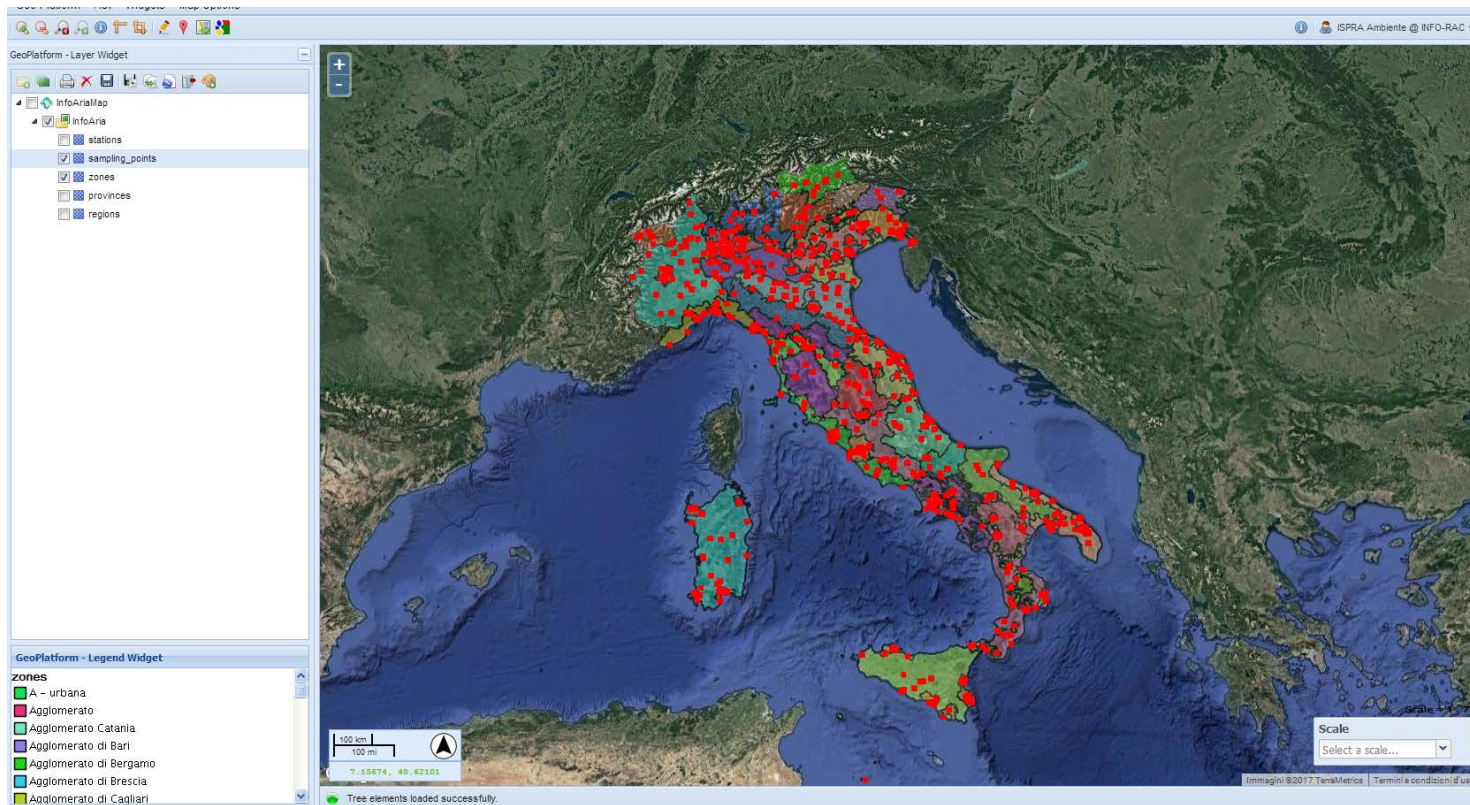
National Network for Biodiversity (NNB)

The shared data management system consists of a **central node**, which allows research and data management, and of **peripheral nodes** to ensure consultation and the efficient integration of information on biodiversity, all without the physical transfer of data, which always reside at cooperating institutions which retain all legal rights. The databases owned by the individual nodes differ in structure (different fields) and architecture (different DBs, such as Access, Oracle, Mysql, etc.), but **they are able to communicate through the BioCAsE Protocol**.



The National Biodiversity Network integrates and enhances data (open data license) of the most important international projects of **Citizen Science** International, such as Global Biodiversity Information Facility (GIBIF) and iNaturalist.

INFOARIA



A national information system developed for the management of data and information about air quality, **integrating information of 800 stations**, for the production of reporting data in compliance with the European Directives.

The management of big data is not about quantity but about their integrated analysis.

Thank you for your attention!

Contacts

Giuseppina Monacelli

ISPRA – DG SINA

giuseppina.monacelli@isprambiente.it

www.isprambiente.gov.it

www.geoportale.isprambiente.it