


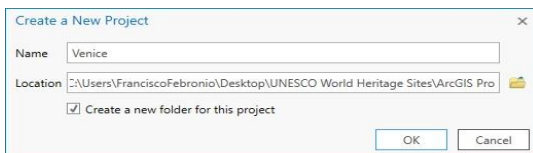
ArcGIS Pro basic guide

1 Venice Case Study

- Before you start the project, create a **new folder** in your **Desktop** with the name **UNESCO World Heritage Sites**. Double click and create **another folder** with the name **ArcGIS Pro**. In this folder, you will **store all maps and features** from this tutorial.

1.1 Create a new project




- Start ArcGIS Pro from your desktop. 
- On the start page, click **Blank** to create a new blank project.
- On the **Create a New Project** dialog box, in the **Name** box, type **Venice**

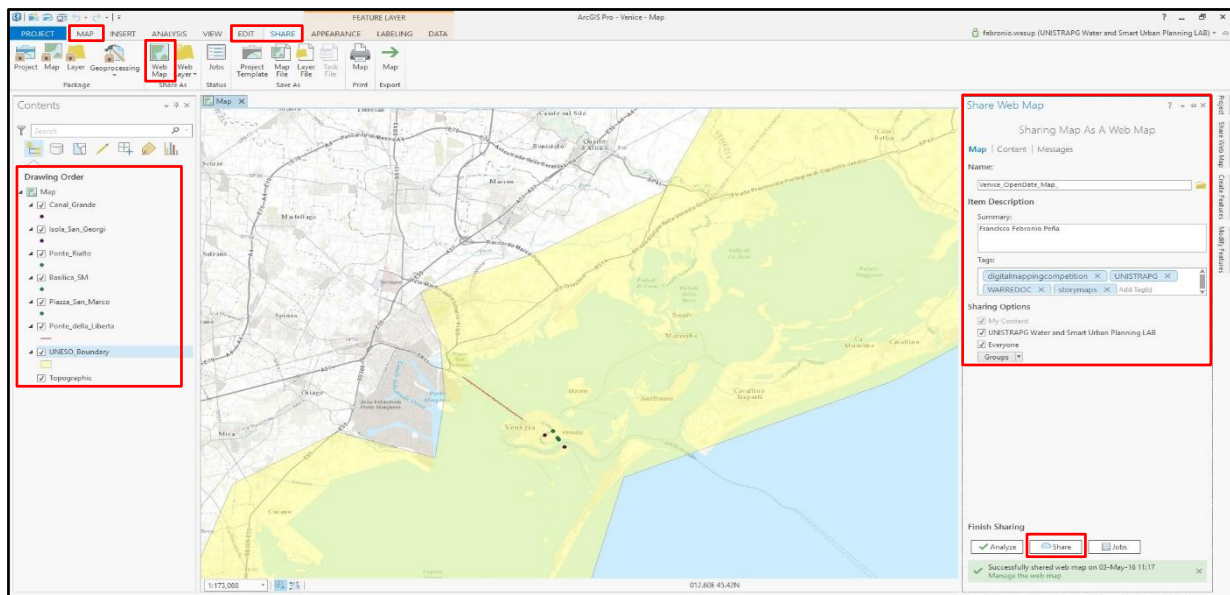


Note: By default, the project is store automatically into a specific location. **Make sure** you assign the right path in the location box.

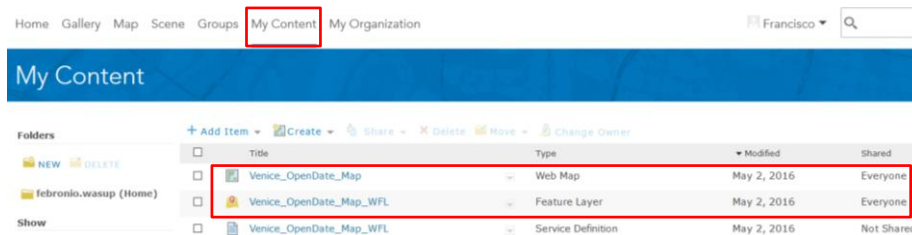
- On the **insert** tab, in the **project** group, click the **New Map** drop-down menu and choose **New Map**. Now on the **map** tab click **basemaps** and choose the imagery style.
- On the **map** tab click **explore** and use your mouse to navigate around the globe. Use the mouse wheel to zoom in and out the map. To find an address click **locate** in the **Inquiry** group, type **Venice** and press enter.

1.2 Create new features

- To **create** new **features**, go to the **project pane** located in the right of your screen and right click on **Datasets**, click the **Venice** drop-down menu and choose **New Feature Class**. On this tutorial, you will create **seven new features (Ponte Rialto, Canal Grande, Isola San Giorgio, Basilica SM and Piazza SM, UNESCO Boundary and Ponte della Liberta)**. From the **geometry type** section, choose polygon, point or polyline depending on your project needs. In this case, we will select **polygon** for **UNESCO Boundary**, **polyline** for **Ponte della Liberta** and **points** for the **remaining features**. From the geometry type section, choose point. To set a **coordinate system** choose **WGS_1984_Web_Mercator_Auxiliar**.
- To create a point feature, click on **Ponte Rialto**, **point**  and click in its map location. Repeat the process for all the new features. Click on **Ponte della Liberta** feature, line  and **digitize the bridge** to connect the historical center to the mainland. Now **zoom out** to visualize the City of Venice and its lagoon. Click on the **buildings feature**, click **polygon**  and digitize UNESCO Boundary. In the **feature layer** ribbon, click on **appearance** to add transparency effects into your project. Click **save** on the **edit** tab when done.
- To share your work as a map online click on the **share** tab and click **web map**. The **share map pane** will appear on your right. On the name blank, write **Venice_OpenDate_Map**. It is very important to write **your name** on the **summary** section and the **tags** as shown in the next page, click **everyone** on **sharing options** and **share**.



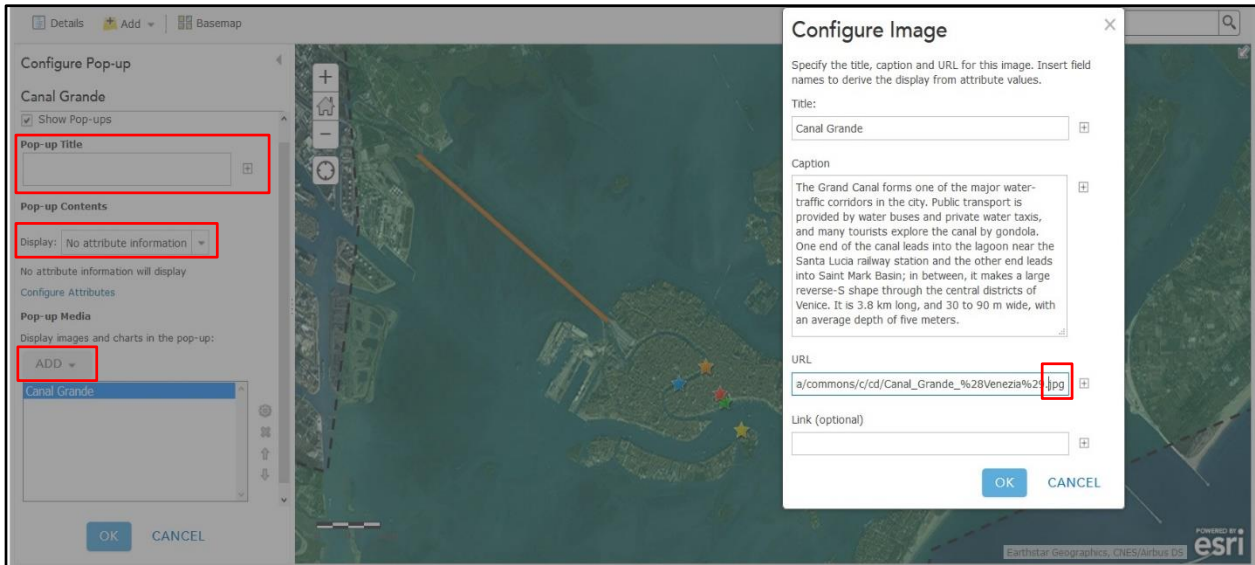
The map is now available on your ArcGIS online account!



Note: Remember that the **main goal** of this tutorial is to **put in practice** your imagination and talent to **create beautiful and powerful maps**. You are allow to make all enhancements and twists as much as you like. Feel free to immerse yourself in the GIS world to **develop skills** and **upgrade** your maps. **Good luck in the competition!**

1.3 Create a map

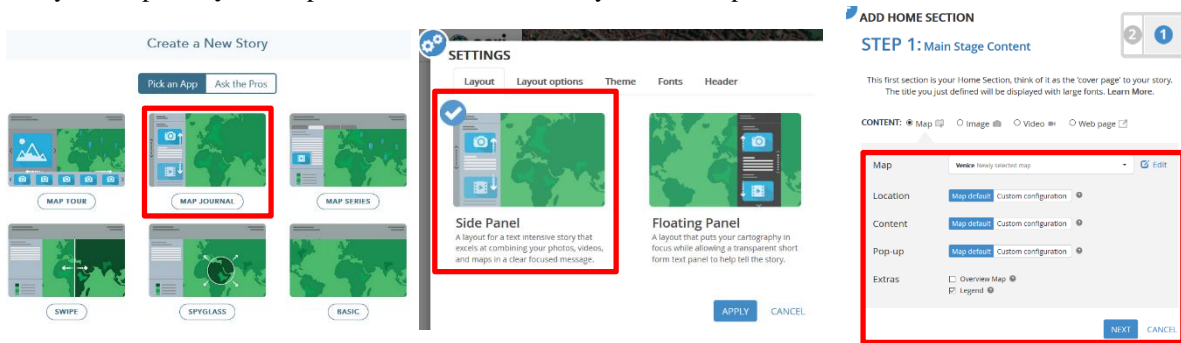
- Click on the drop-down menu next to feature layer and choose **Add layer to map**. ArcGIS Online interface will show up on your screen. Our goal is to insert a brief description and a picture for each of the five features and create a story map.
- On the **contents pane**, click on **more options** **⋮** and click **rename** to change the name of all features.
- To **improve visualization** change the **format and color** and of your feature. Click on **change style** **🎨**, select **location (single symbol)** option and click on **symbols**. Choose from a wide variety of shapes and icons to distinguish your project. Adjust color, outline, pixel size and transparency if needed. Click OK when done. Repeat the process for all features.
- To add text and pictures on your feature click on **more options** **⋮** and click **configure pop-up**. Erase the pop-up title box and display **no attribute information**. On the pop-up media menu, click **add image** to configure the **pop-up** window. First, add the **title** and **caption** of your feature. Now on a separate window google an image you like, open the site and open the picture.
- **Important: To publish pictures on ArcGIS Online, make sure you copy the URL with a .jpg extension at the end of the domain.** Repeat the process for all features. Repeat **step #8** to **improve visualization** on Sites.
- Click **save** on the **edit** tab when done. Once you complete the process, your map should look like this.



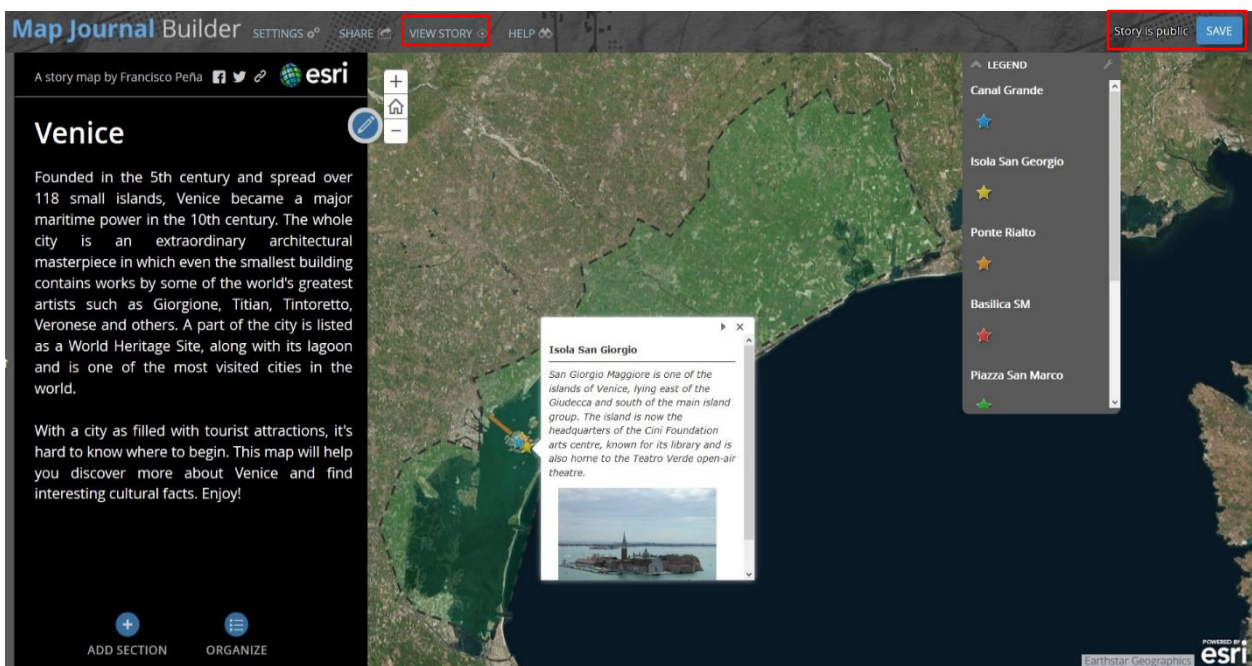
- Save your map. You have complete the 2nd phase of the digital mapping course. Now it is time to create your story map.

1.4 Create a story map

- Go to <https://storymaps.arcgis.com/en/my-stories/> click on create story, select the Map Journal builder, the side panel, title your map, add your map and write a brief summary in the side panel section.



1. Click on one of your features and your map should look like this.



Note: You can always go back on your map to add more detail and information.

- Save your story map as **public** and click **view story**.

Congratulations!

You have successfully **complete** this tutorial.